

P.2.3 Types of Energy KEY

By: Terry Dugger

Thermal Energy

Thermal energy is energy in the form of heat.

Electrical Energy

Electrical energy is energy in the form of electricity.

Chemical Energy

Chemical energy is energy from a chemical reaction.

Solar Energy

Solar energy is energy from the sun.

Electromagnetic Energy

Electromagnetic energy is energy in the form of microwaves, radio waves, and light.

Energy Conversion



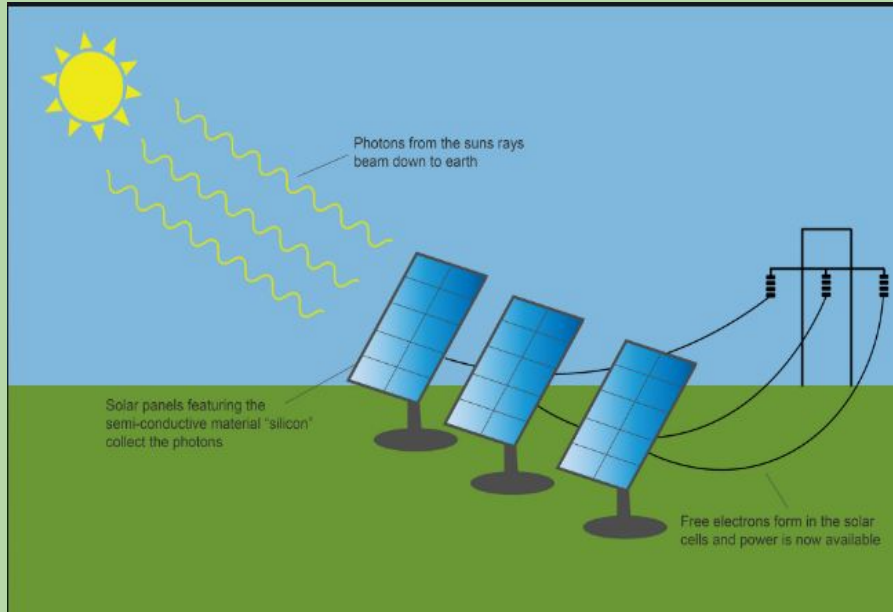
Fire converts:

1. Chemical to thermal
2. Chemical to electromagnetic (light)

Energy Conversion

Solar panels converts:

1. Solar to electrical



Energy Conversion



Light bulbs convert:

1. Electrical to electromagnetic (light)

Energy Conversion



Microwave oven converts:

1. Electrical to electromagnetic

Energy Conversion

Cars convert:

1. Chemical to mechanical



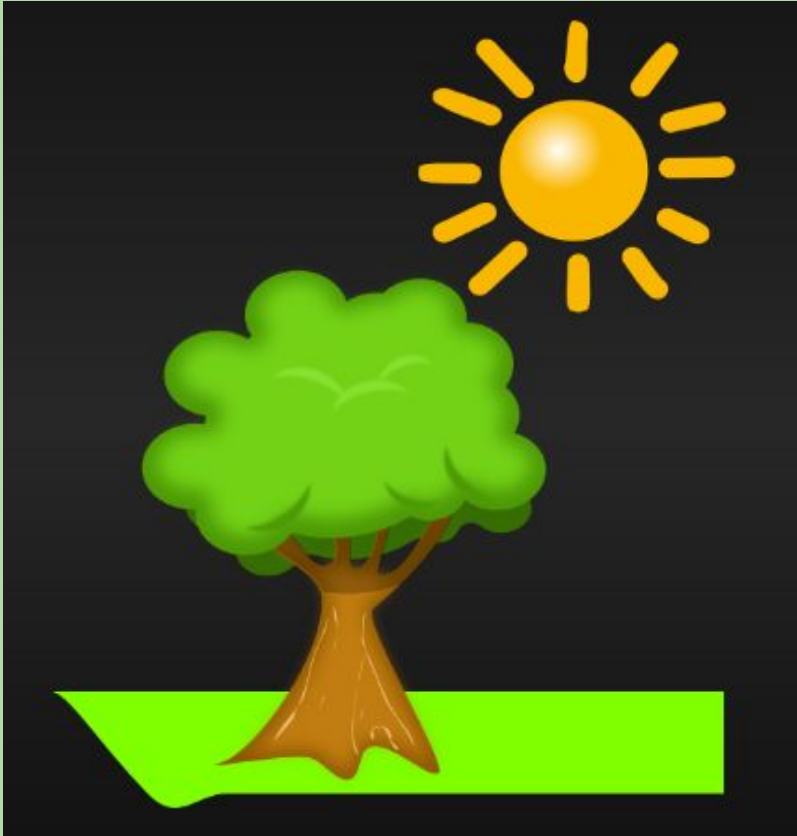
Energy Conversion

Batteries convert:

1. Chemical to electrical



Energy Conversion



Trees convert:

1. Solar to chemical

Energy Conversion



Fans convert:

1. Electrical to mechanical

THE END

The image features the words "THE END" in a large, stylized, 3D font. The letters are rendered in a light blue or cyan color with a glowing, ethereal quality. A bright, white light source on the left side of the frame casts a long, narrow beam of light that passes through the text, creating a lens flare effect. The background is dark, with a gradient of blue and purple light emanating from the right side, suggesting a night sky or a digital environment. The overall aesthetic is futuristic and cinematic.